

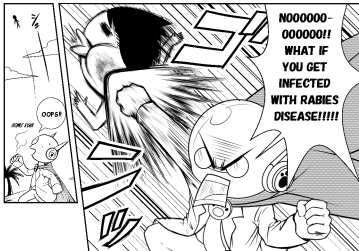
LET'S GO ON AN ADVENTURE TO LEARN ABOUT RABIES!

ILLUSTRATED BY FEI SHIH-HUAI

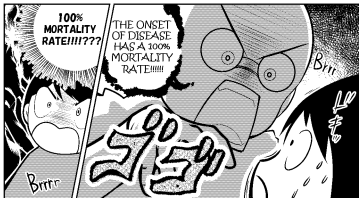
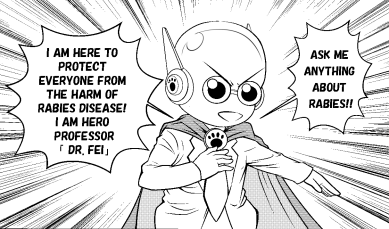


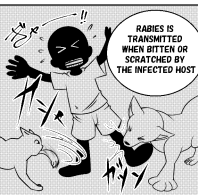
Bureau of Animal and
Plant Health Inspection and
Quarantine, Chinese Taipei

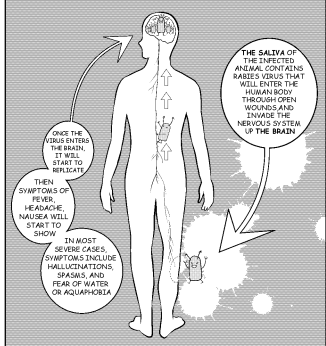
GRADUATE SCHOOL OF MANGA,
KYOTO SEIKA UNIVERSITY, JAPAN













-CLINICAL SYMPTOMS OF RABIES~



THE TONGUE, CHIN AND THROAT WOULD BE IN PARESIS RESULTING IN DRY TONGUE STICKING OUTSIDE OF AN OPENED JAW

SHOWING AGGRESSIVE BEHAVIOR
ATTACKING ANYTHING IN SIGHT





CIRCLING WITHOUT
A PURPOSE



SHOWING SIGNS OF VOMITING
WITH NOTHING COMING OUT

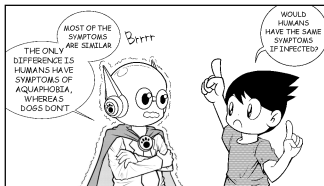


ENTERING
THE
PARALYSIS
STATE
(DYING)



COULDN'T SIT STILL AND
COULDN'T STAND STILL

EVEN THOUGH AT THIS STAGE,
THE DOG IS IN COMA THE MAJORITY OF TIME,
BUT IT IS STILL AGGRESSIVE AND MIGHT BITE,
SO BE CAREFUL



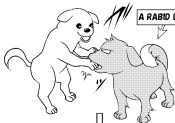


JUST
BY
LOOKING
AT A
PICTURE

YOU
CANNOT
TELL IF
A DOG
IS INFECTED
BY RABIES
DISEASE



THAT IS
INCORRECT
!!!!!!



A RABID DOG

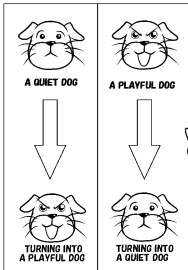
WHY IS IT SO?
BECAUSE
THERE IS
LATENT STAGE
IN RABIES
INFECTION

MEANING
AT THIS STAGE,
THE SYMPTOMS
ARE TEMPORARILY
ABSENT

IT COULD
BE POSSIBLE
THAT THE DOG
HAS ALREADY
BEEN BITTEN BY
A RABID DOG

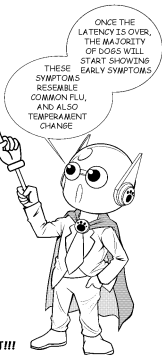
BUT
THE ONSET OF
DISEASE
HASNT
SHOWN

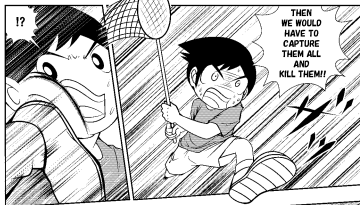


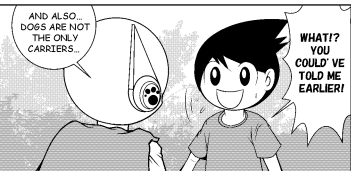
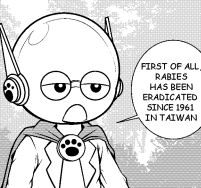


**A GOOD DOG SUDDENLY BITES...
AN AGGRESSIVE DOG SUDDENLY
BECOMES PASSIVE...**

THEN YOU' LL HAVE TO WATCH OUT!!!







HOST CARRIER OF RABIES DISEASE



FOX



BAT



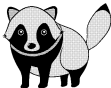
SKUNK



RACCOON



MINK



MONGOOSE





FERRET BADGERS AT TAIWAN

UP TILL NOW (2017),
THE ONLY
MAJOR CARRIER
IN TAIWAN IS
FERRET BADGER



WE DISCOVERED
A DEAD
FERRET BADGER
WITH RABIES
INFECTION
IN 2013



THE DOGS
OF 2017
ARE SAFE
IN TAIWAN
AS OF NOW!



About
that
...



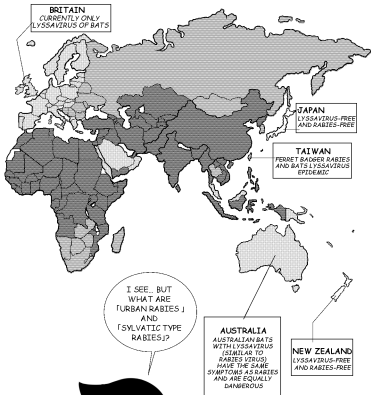
WITH SO MANY
CARRIER HOSTS,
WHO DARES TO
GO TRAVELING
ABROAD?



YOU CAN ALSO GET
VACCINATED BEFORE
GOING ABROAD!
HOWEVER,
IF YOU'RE BITTEN,
YOU STILL NEED
A BOOSTER SHOT

DOUBLE-CHECK IF THE
DESTINED COUNTRY
IS RABIES-EPIDEMIC
BEFORE TRAVELING





URBAN RABIES

MAJOR CARRIER ANIMALS



THERE ARE
TWO TYPES
OF RABIES

BUT THIS DOES
NOT MEAN
ONLY DOGS ARE
DANGEROUS.
WILD ANIMALS
ARE DANGEROUS
TOO

CHARACTERISTICS

INFECTED IN THE CITIES

THE MORTALITY RATE IS
HIGHEST WHEN HUMANS ARE
INFECTED

THE MAJOR
CARRIER ANIMAL IS 'DOGS',
OUR CLOSEST ANIMAL FRIEND



SYLVATIC RABIES

MAJOR CARRIER ANIMALS

DON'T GO
NEAR
WILDLIFE
ANIMALS
CASUALLY!



THE VIRUS IS TRANSMITTED
BETWEEN WILD ANIMALS

THE CHANCE OF HUMANS
GETTING INFECTED IS LESS

THIS HAPPENS IN COUNTRIES WITH
MANY WILD LIFE RESERVOIRS,
SUCH AS THE U.S., CANADA,
AND EUROPEAN COUNTRIES



**AFTER
ALL,**

**THE MOST
IMPORTANT
IS...**

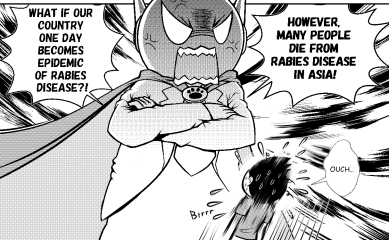
**VACCINATE
OUR PETS!**



**99% OF
PEOPLE WHO
DIED FROM RABIES
GOT THE VIRUS
FROM DOGS**

**UNLIKE
HUMANS,
ONCE A DOG IS
INFECTED,
SHOTS CAN'T
SAVE THEIR LIVES
ANYMORE**

**SO PLEASE
REMEMBER TO
GIVE RABIES
VACCINATION
SHOTS TO
YOUR PETS
EVERY YEAR**



**DO NOT
ABANDON
YOUR PETS!**

STRAY DOG

ANOTHER
IMPORTANT
FACT



STRAY DOG

**RABID DOG
FROM ABROAD**

IF ONE DAY
A RABID DOG
COMES INTO
OUR COUNTRY
BY ALL MEANS

AND BITES
A STRAY DOG



IT'S
ALMOST LIKE
ZOMBIES
SPREADING
VIROUS!

STRAY DOG

IF STRAY DOGS
BECOME THE
SOURCE OF
INFECTION,
THE SPREAD
WILL THEN BE
UNCONTROLLABLE

Brrrr





ONCE THE
ONSET OF
DISEASE
STARTS AND
SYMPTOMS
START
SHOWING
...

YOU
NEED TO
GET
VACCINATED
BEFORE
THE
SYMPTOMS
APPEAR!



YOU
WILL
DIE!



I'VE
LEARN'T A
VALUABLE
LESSON.

THEN
...

HOW COULD
I HAVE NEVER
KNOWN ABOUT
SUCH
IMPORTANT
KNOWLEDGE



